

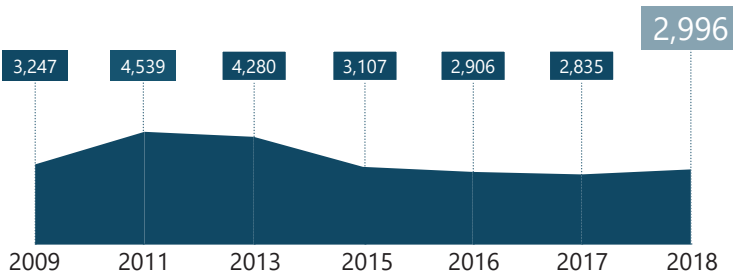
SONOMA COUNTY 2018 HOMELESS CENSUS & SURVEY EXECUTIVE SUMMARY



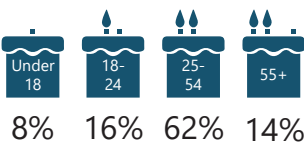
Every year, communities across the country conduct comprehensive counts of the local homeless populations in order to measure the prevalence of homelessness in each local Continuum of Care.

The 2018 Sonoma County Point-in-Time Count was a community-wide effort conducted on February 23, 2018. In the weeks following the street count, a survey was administered to 519 unsheltered and sheltered homeless individuals to profile their experience and characteristics.

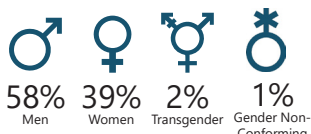
Census Population: Longitudinal Trend



Age

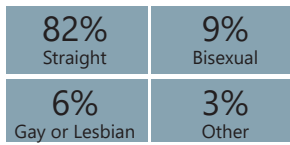


Gender



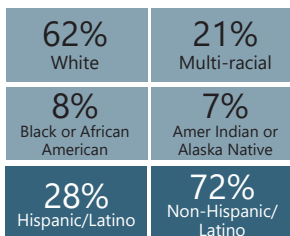
Sexual Orientation

(Top 4 Responses)



Race/Ethnicity

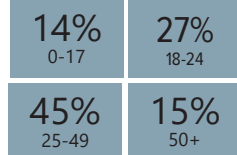
(Top 4 Responses)



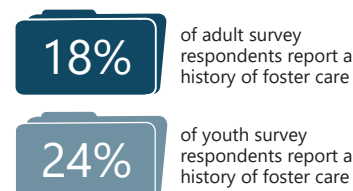
First Homelessness Episode



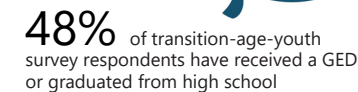
Age at First Episode of Homelessness



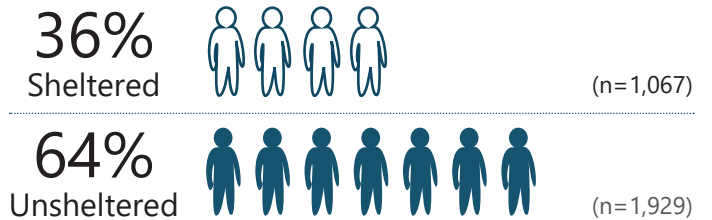
Foster Care



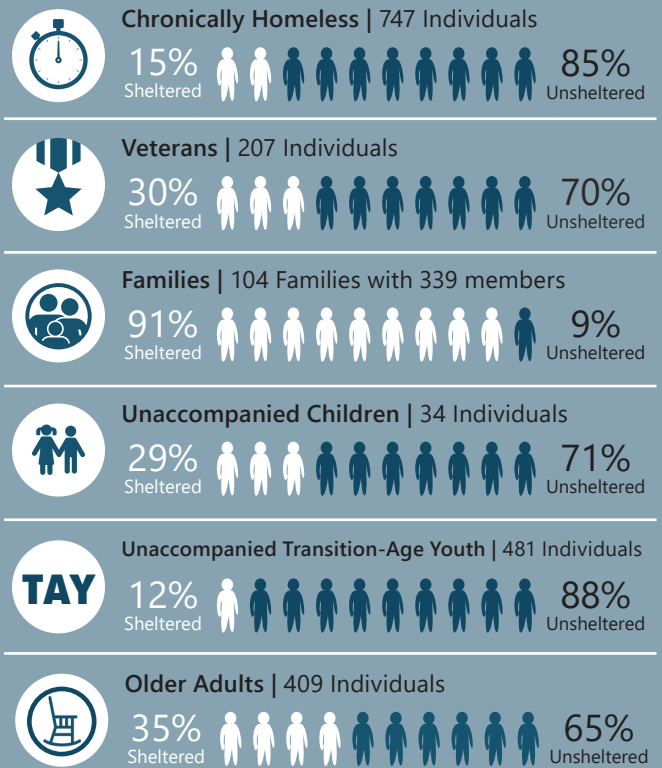
Educational Attainment



2018 Sheltered/Unsheltered Population



Subpopulation Data*

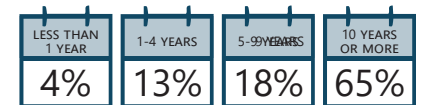


Residence Prior to Homelessness

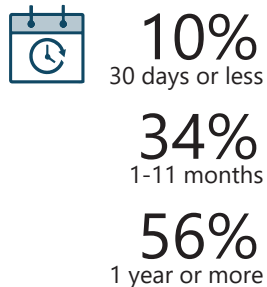


Length of Time in Sonoma County

(of those living in Sonoma County prior to becoming homeless)

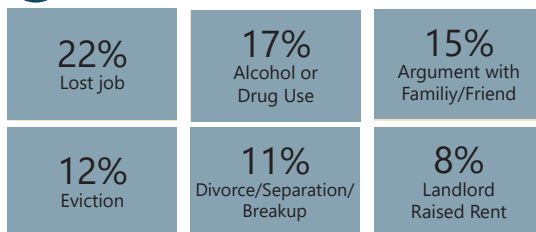


Duration of Current Episode of Homelessness



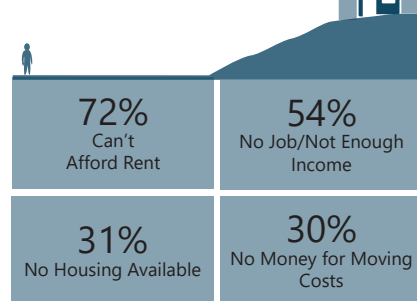
Primary Event or Condition That Led to Homelessness

(Top 6 Responses)

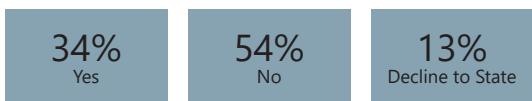


Obstacles to Permanent Housing

(Top 4 Responses)



History of Domestic Violence



Interest in Permanent Housing

90% of survey respondents said YES when asked if they would want to move into safe, affordable permanent housing were it available



44%

of survey respondents reported a disabling condition



What is a disabling condition?

A disabling condition is defined here as a physical disability, mental illness, chronic depression, alcohol or drug abuse, chronic health problems, HIV/AIDS, Post-Traumatic Stress Disorder (PTSD), or a developmental disability.

Health Conditions

Current health conditions affecting housing stability or employment.

(Note: Multiple response question, numbers will not total to 100%)



35%

Psychiatric or Emotional Conditions



33%

Drug or Alcohol Abuse



28%

Post-Traumatic Stress Disorder



27%

Chronic Health Problems



27%

Physical Disability



14%

Traumatic Brain Injury

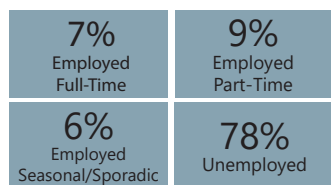


3%

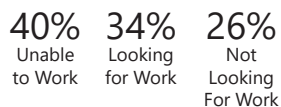
AIDS/HIV Related

Employment

Employment Status



If Unemployed, Currently...



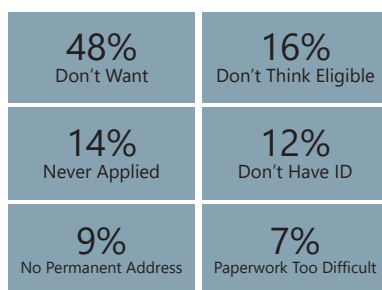
Services and Assistance



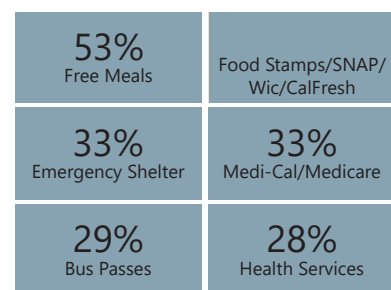
72%

of survey respondents reported receiving government benefits

Reasons for Not Receiving Any Government Assistance (Top 6 Responses)



Services Currently Accessing (Top 6 Responses)

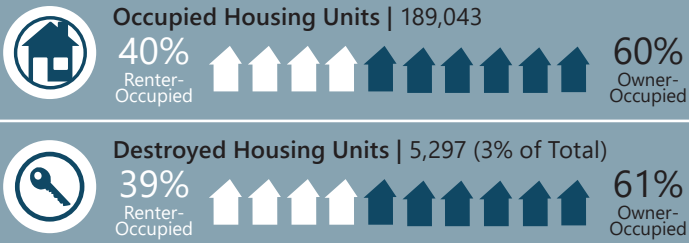


2018 SONOMA COUNTY TELEPHONE SURVEY

In March 2018, Sonoma County and ASR implemented a representative, telephone-based household survey to understand the impacts of the fall 2017 fires. A total of 1,191 valid surveys were conducted in this additional assessment of unstably housed and fire-affected populations.

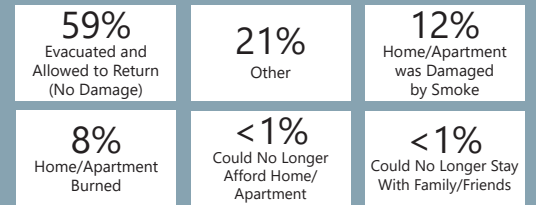
These data are intended to assist service providers, policy makers, funders, and local and state government in gaining a better understanding of the population of individuals who are not homeless but who lack a residence of their own, how the 2017 fires affected the county at large, and planning for the future.

Sonoma County Housing



63% of households were impacted by the fires

How Housing Situations Were Impacted by the Fires

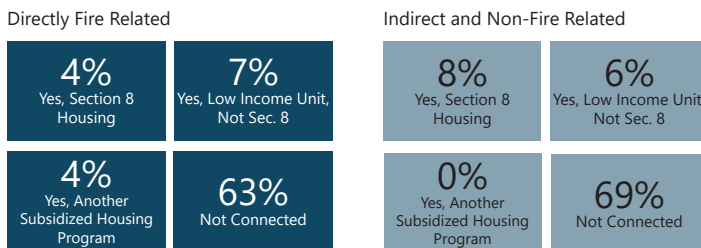


Temporarily Housed Population

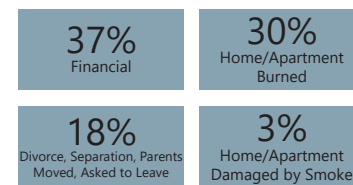
Precariously Housed | 21,482 Individuals



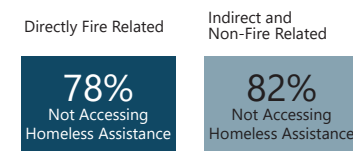
Temporary Residents and Connection to Housing Assistance by Cause



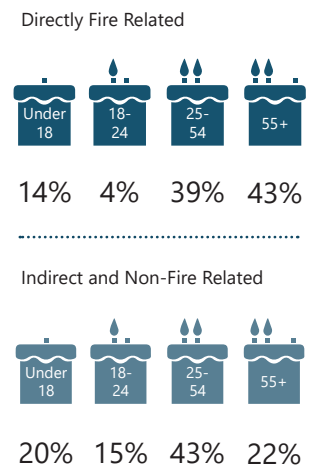
Primary Causes of Temporary Residence (Top 4 Responses)



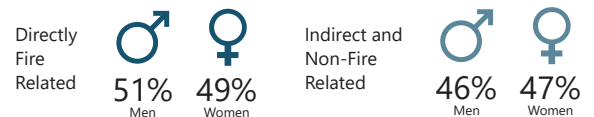
Temporary Residents Access to Homeless Assistance by Cause



Temporary Residents by Age and Cause



Temporary Residents by Gender and Cause



*Subpopulation Definitions

Chronically Homeless

An individual with a disabling condition or a family with a head of household with a disabling condition who:

- » Has been continuously homeless for 1 year or more and/or;
- » Has experienced 4 or more episodes of homelessness within the past 3 years with the combined homeless episodes totaling a year or more.

Veterans

Persons who have served on active duty in the Armed Forces of the United States. This does not include inactive military reserves or the National Guard unless the person was called up to active duty.

Families

A household with at least one adult member (persons 18 or older) and at least one child member (persons under 18).

Unaccompanied Children

Children under the age of 18 who are homeless and living without a parent or legal guardian.

Transition-Age-Youth

Young adults between the ages of 18 and 24 years old.

The complete comprehensive report includes a more detailed profile of the characteristics of those experiencing homelessness in Sonoma County. It can be found at <http://www.sonoma-county.org/cdc/cdhomeless.htm>

Source: Applied Survey Research. (2018). Sonoma County Homeless Census & Survey. Watsonville, CA.